

The background is a detailed architectural drawing of a ground floor plan. It features various rooms, corridors, and structural elements. Key labels include 'NEW BOUNDARY', 'ROOF LINE ABOVE', 'BUILDING LINE ABOVE', 'OVERHEAD CORRIDOR', 'NEW BRICK VENER WALL', 'NEW ETUD WALL', 'NEW LIGHTWEIGHT WALL', 'EXISTING WALL', 'BOUNDARY', 'NO. 12 ELABANA CRES', 'NO. 14 GROUND FLOOR PLAN', and 'REFER TO STORMWATER ENGINEER'S DRAWINGS FOR OSD'. There are also numerous dimensions and technical specifications throughout the plan.

Index Center Redesign

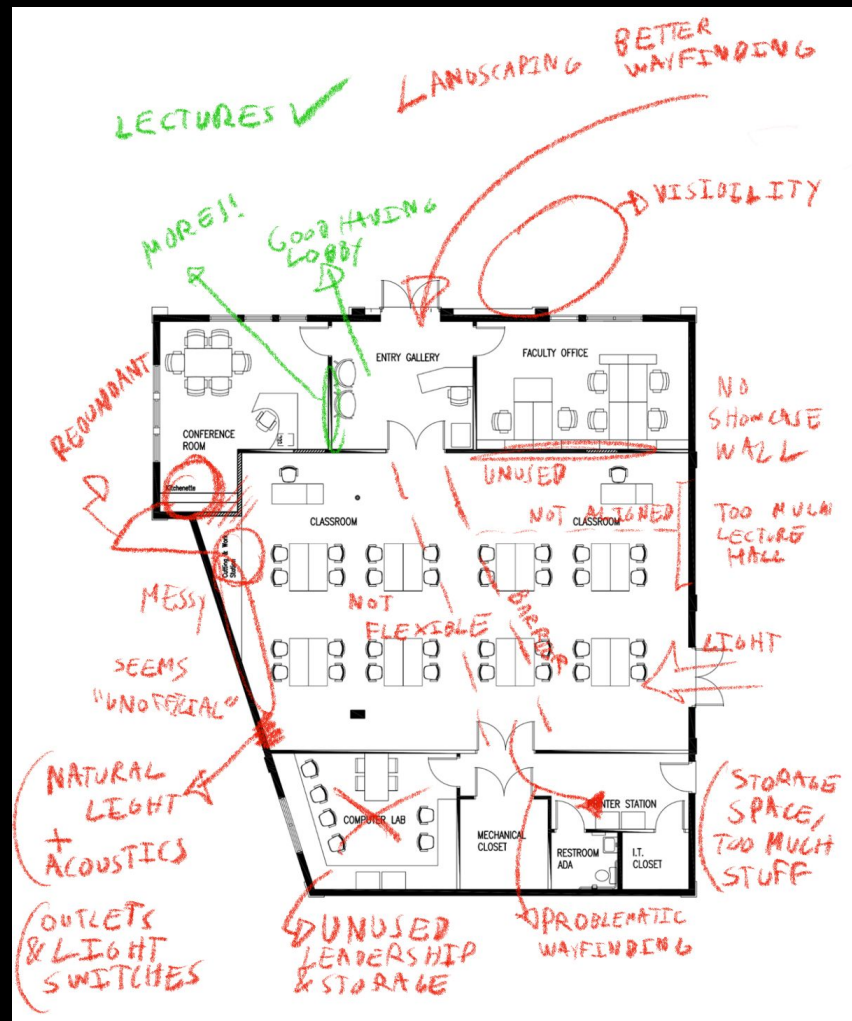
Group 1 - Brody, Juan, Brian, Tia

Contents

1. Analysis of Current Learning Spaces
2. Innovative Design Trends in Educational Environments
3. Cross-Industry Collaborative Spaces
4. Brainstorming
5. Ideation Sketches
6. Final Layout
7. Design Style Guide
8. Final Visualization



1. Analysis of **Current Learning Spaces**



Positive Examples



EDES Faculty Office

- Conference room
- Flexible lighting in conference room
- Natural lighting
- Flexible desk setup
- Multiple action areas
- Tool accessibility
- Kitchenette
- Unappealing design
- Harsh lighting in main space



2nd Floor

- Booths
- Private/group
- Lack of light
- Located in a hallway
- No space for larger groups



2nd Floor Classroom

- Flexible
- Integrating tech
- Variety of spaces
- Modern & comfortable
- Too cluttered



2. Innovative Design Trends in **Educational Environments**

MAKE SPACE

- IDEO: offices & classrooms
- Storytelling for inspiration (lobby)
- Build prototype spaces and test them
- Inexpensive ideas
- Get people moving, avoid homogeneous horizontal surfaces
- “Around the campfire”
- Many more...



Biophilic Design

- Natural / nature inspired visuals
- Natural lighting, lighting mimicking daylight
- Natural materials and colors
- Recreate natural air conditions
- Organic forms



“The more demanding the collaboration task is, the more individuals need punctuating moments of private time to think or recharge.”

Christine Congdon

Me vs We - Balancing Privacy With Collaboration

- Information control - shifting between sharing and concealing information
- Stimulation control - shifting between levels of attention, allowing for quiet and active workspaces
- Office Ecosystem - a range of flexible spaces that allow people to choose how they work



3. **Cross-Industry** Collaborative Spaces

ACADEMIC STUDY

- Flexible unspecific spaces
- Different activities
- Isolation & group
 - Single flexible workspaces
- Task controllable lighting
- MESS: Horizontal surfaces vs vertical storage
- Inspiration: domestic, airport lounge, art gallery

New Environments for Working

Andrew Laing
Francis Duffy
Denice Jaunzens
Steve Willis



The re-design of offices and environmental systems
for new ways of working

WSJ Open Office

Samsung, Amazon, Marriott, Adobe, LinkedIn, etc.

- Encourage movement
- Nature and light
- Integrate technology for hybrid projects
- Domestic elements
- Flexibility, discourage ownership
- Comment section
- Diversification



“Diversification is a safety factor that is essential because we should be humble enough to admit we can be wrong.”

JOHN TEMPLETON

Procter & Gamble

Corporate HQ in Ohio, USA

- “It’s not about expense, it’s about looking at things differently”
- Very few ‘permanent’ items
- Designated action spaces (ie. the womb)
- ColorLESS space ColorFUL materials
- informal



4. Brainstorming

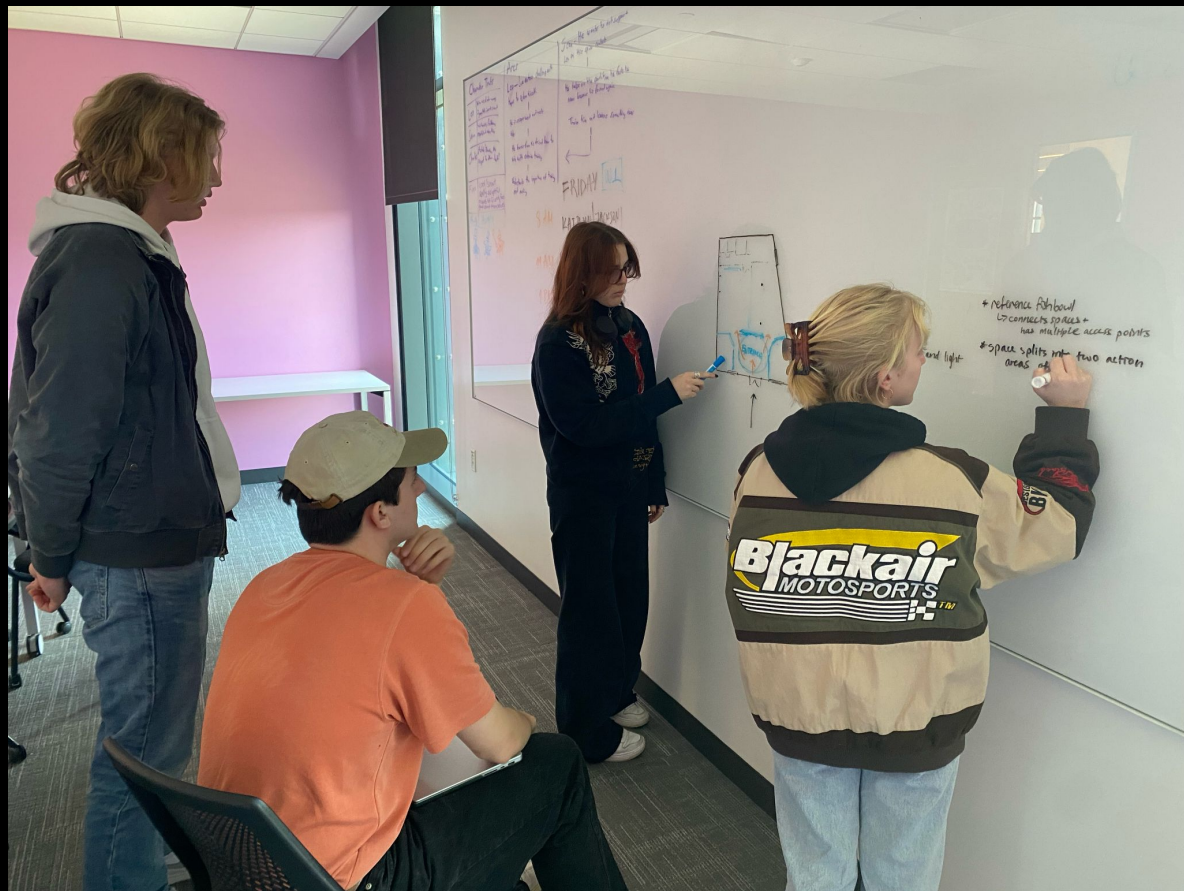
Guest Stars

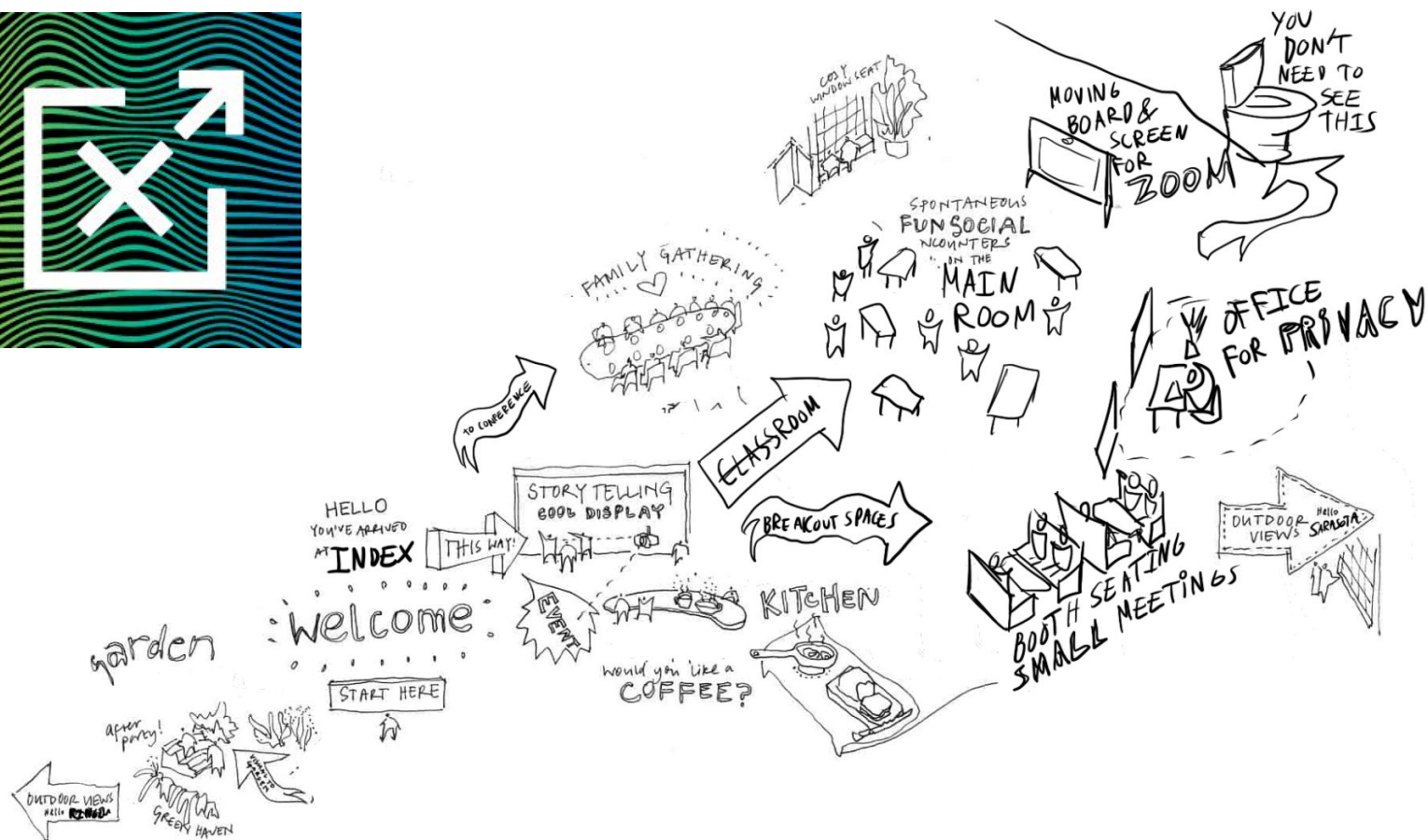
Amanda Caldera EDES
Junior

- TEA
- Spatial Planning

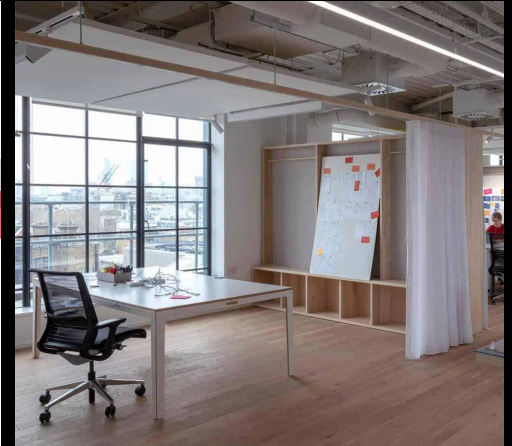
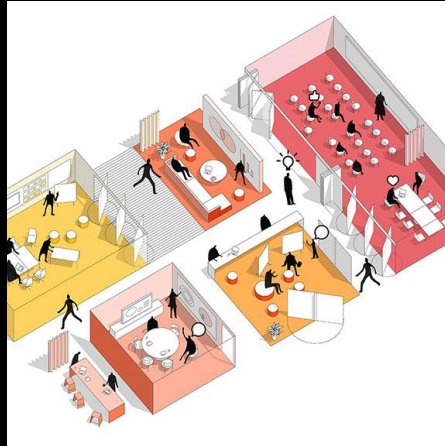
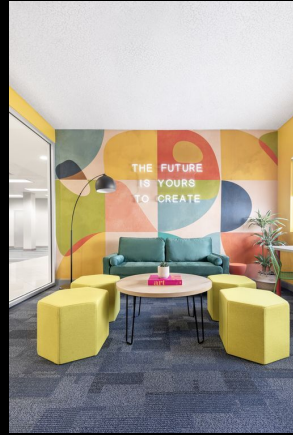
Jack Coleman BOAD
Sophomore

- Experience with office design
- Is always on the AC 2nd floor





Moodboard

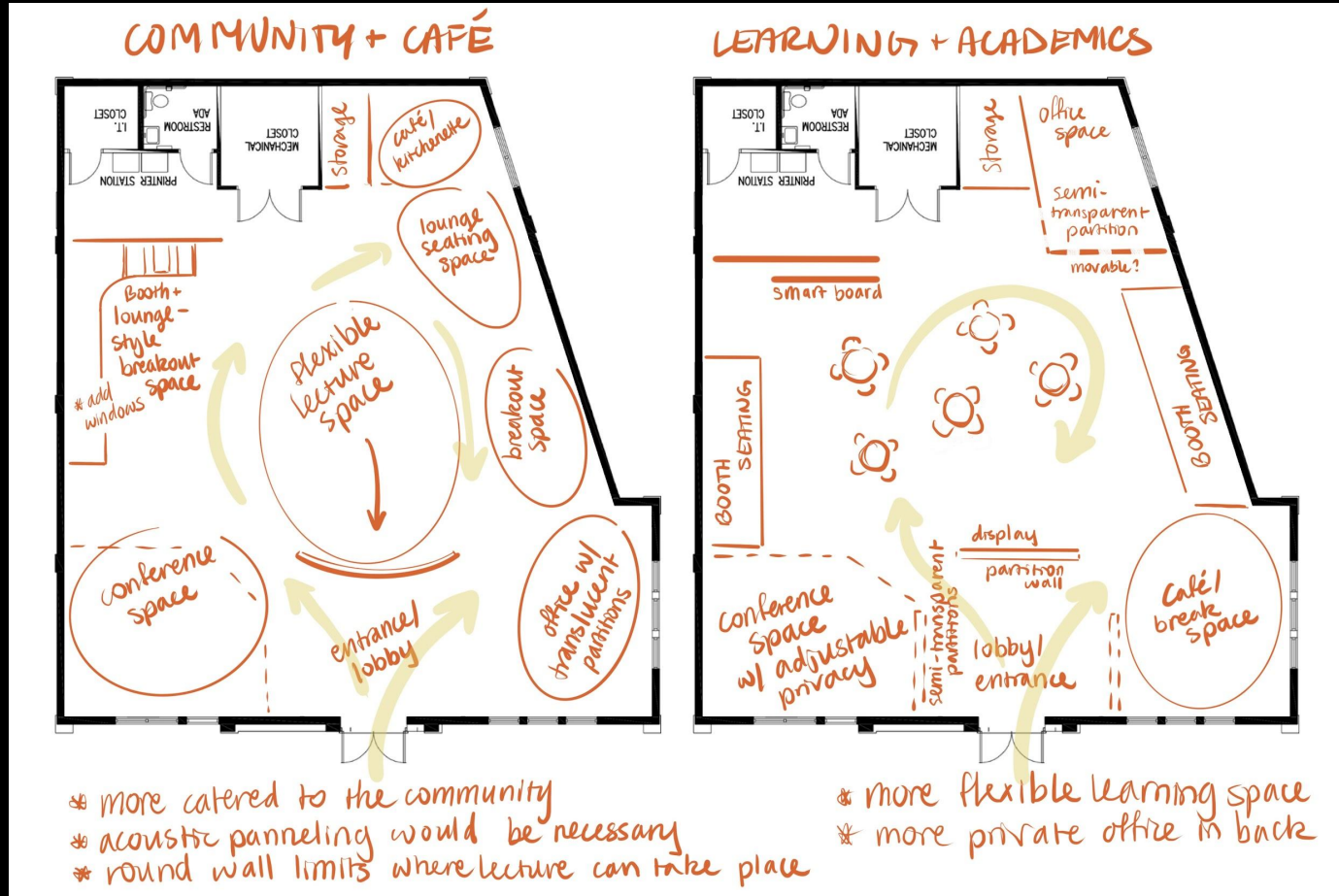




小红书

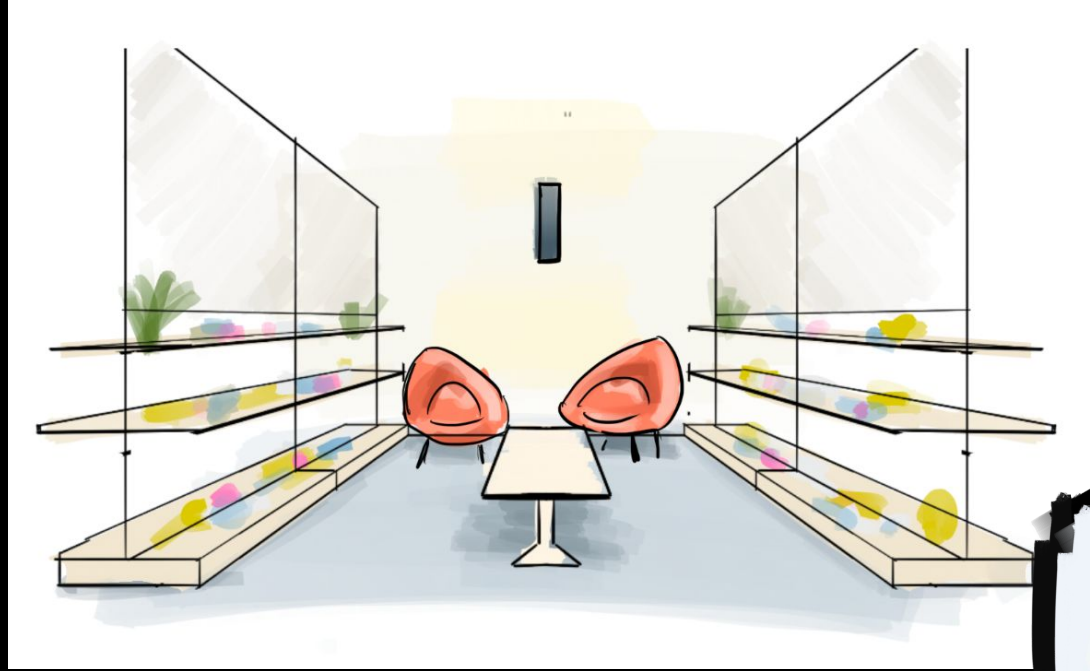
小红书号: 347913233

Floorplan Ideation

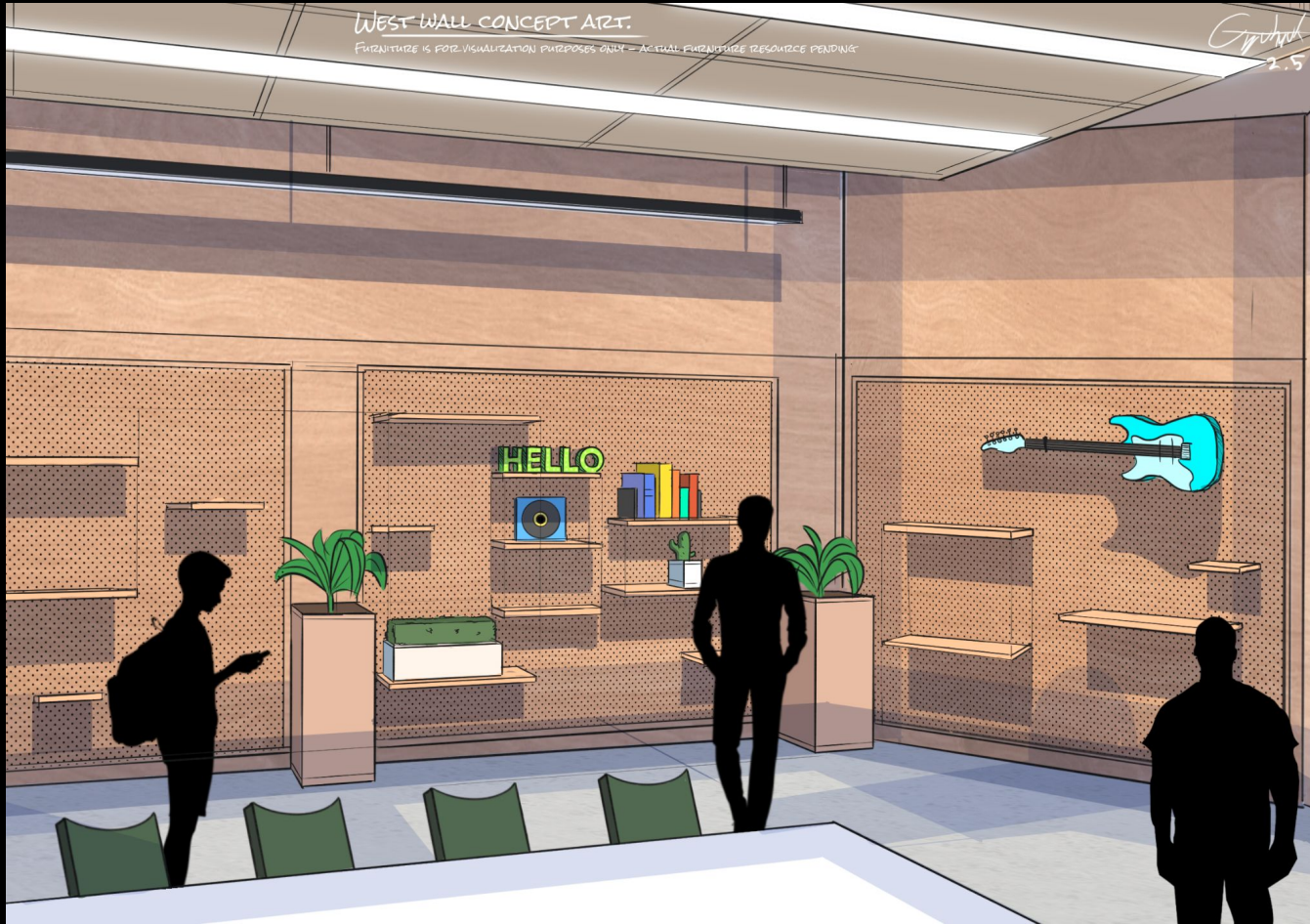


5. Ideation Sketches

East Wall Collaboratory Sketch

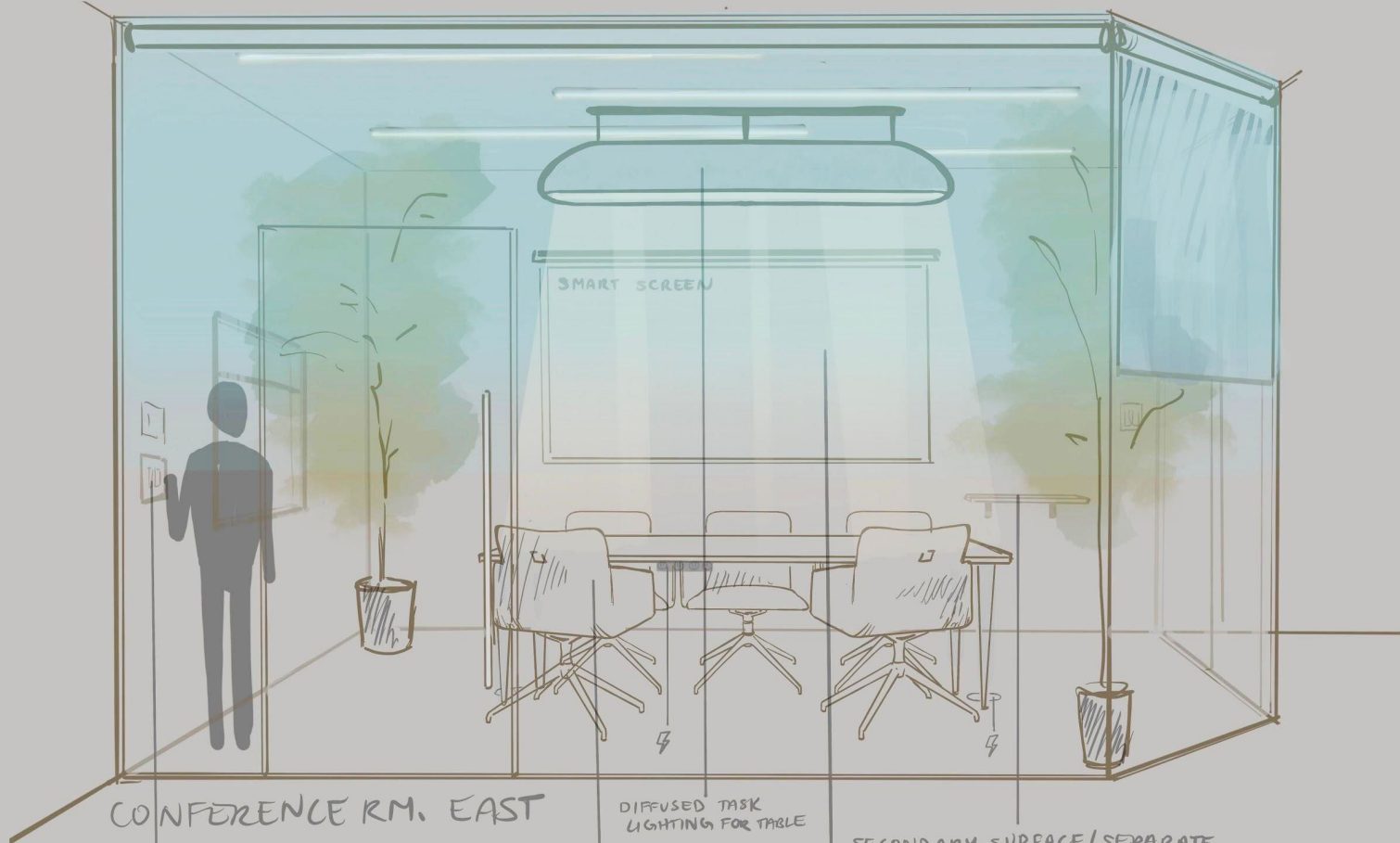


West Collaboratory Sketch



Office Sketches - not final





CONFERENCE RM. EAST

ACCESSIBLE SWITCHES
AT BOTH ENTRANCES FOR
BLINDS + LIGHTS

SLENDER CHAIRS
TO MAXIMIZE SEATING +
MINIMIZE VISUAL NOISE

DIFFUSED TASK
LIGHTING FOR TABLE

SECONDARY SURFACE/SEPARATE
TABLE FOR PRESENTATION ASSISTANCE

SMART SCREEN FOR
SPACE EFFICIENCY
+ TECHNOLOGY EASE + MAKES
WAY FOR TASK LIGHTING

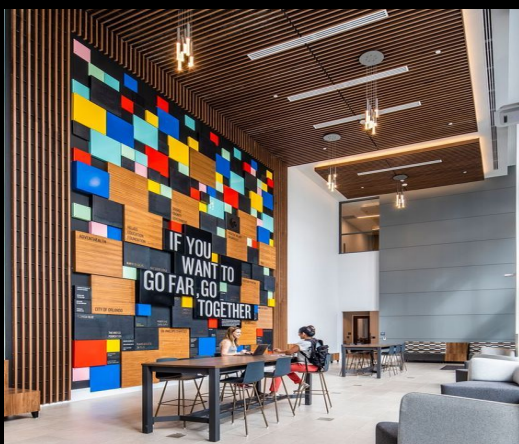
Cafe Sketch

CAFE CONCEPT IDEATION ART

CAFE / WORKSPACE FOR COMMUTER STUDENTS, ALL FURNITURE AND APPLIANCES

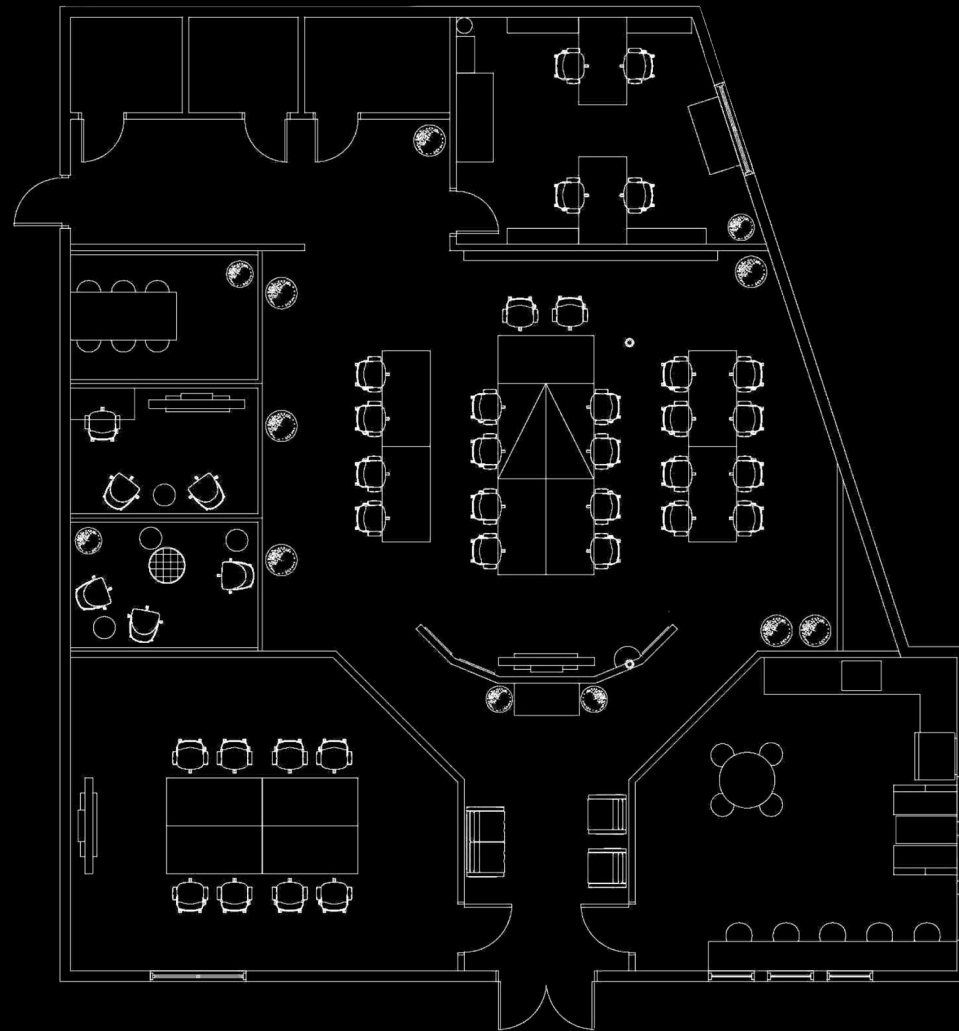


Entrance Sketch

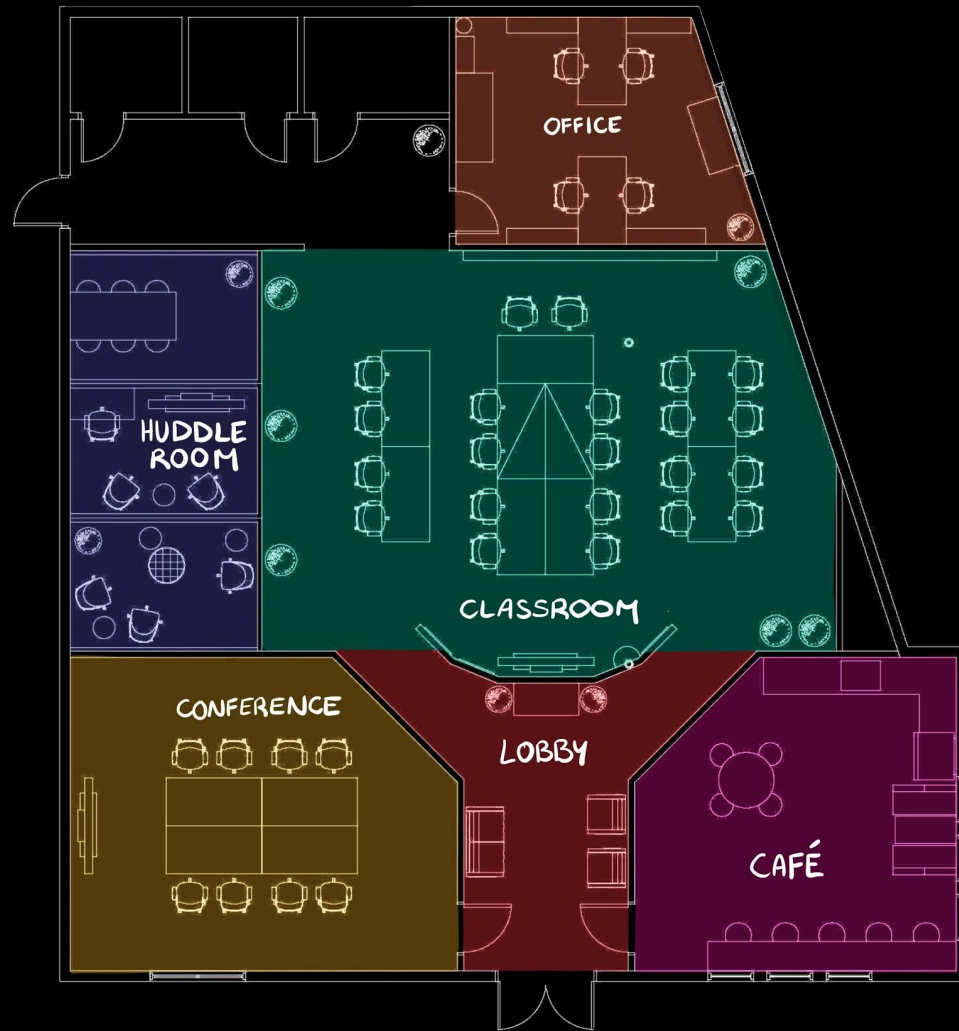


6. Final Layout

AutoCAD Floor Plan



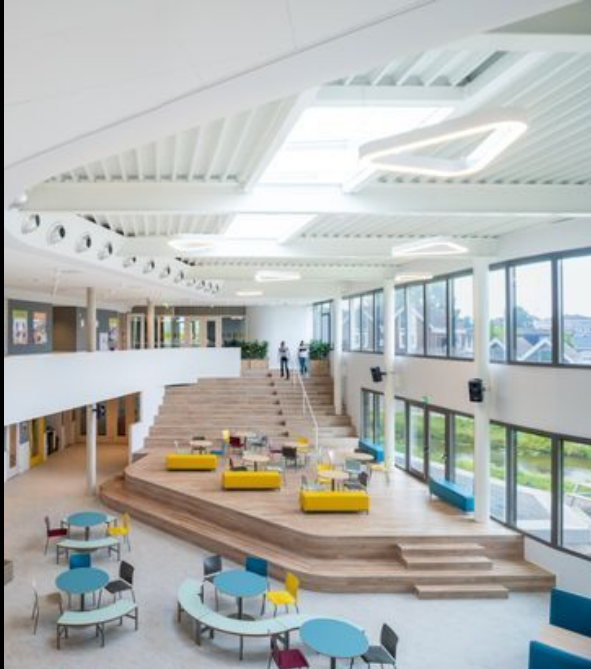
AutoCAD Floor Plan



7. Design Style Guide

Style Guide

Color



- Color used to frame and accent huddle spaces
- Space for eyes to rest
- Colors Layer Easily
- Used to differentiate purpose of a space
- Focus and focal points within space

Style Guide

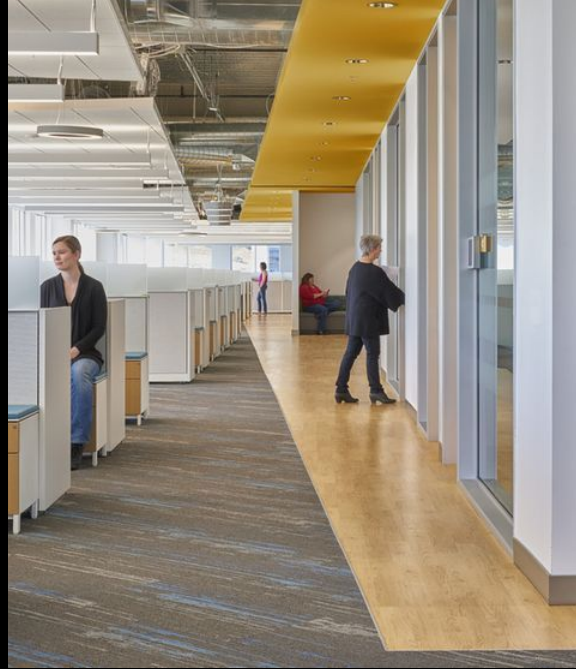
Walls and Partitions



- Functional pegboard built into partitions
- Huddle spaces have both whiteboard and pegboard walls
- Glass with grilles divides space while keeping an open feel
- Large panes are vertical

Style Guide

Floors



- Sealed concrete for easy maintenance and to reflect light in smaller spaces
- Wood floor accent to create implied hallway spaces

Style Guide

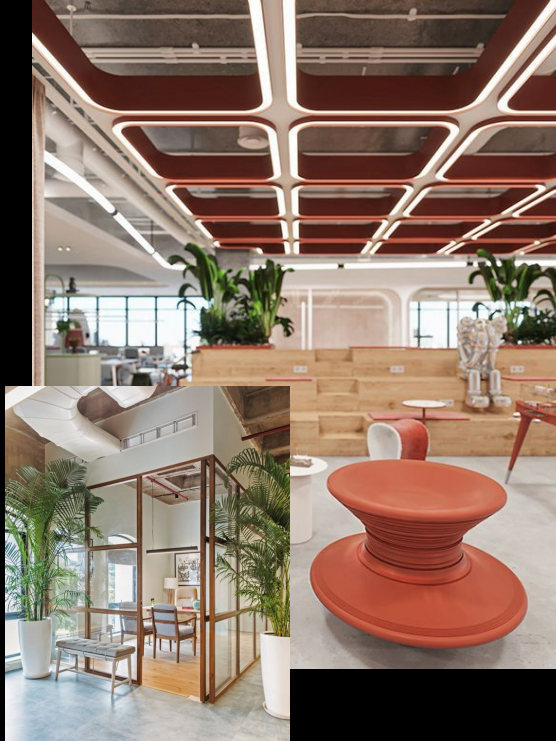
Ceiling and Lighting



- Lobby ceiling (left-hand image)
- Ceiling panels for acoustics with integrated lighting
- Ceiling panels would also mix task lighting with general lighting as two different fixtures on the same ceiling panel

Style Guide

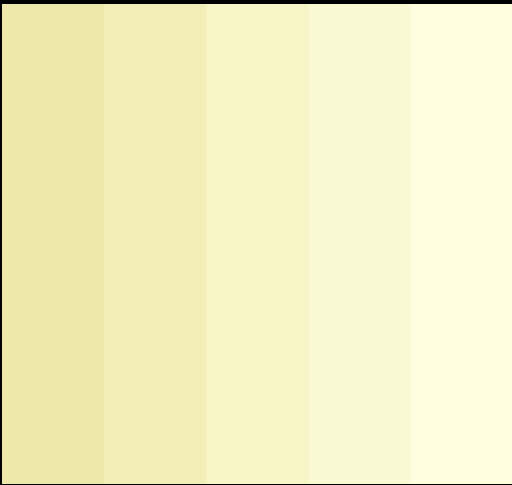
Furniture and Greenery



- Furniture is visually light, moveable with a pop of color
- Plants are used to frame action spaces, don't occupy much visual space
- Potential for casual furniture to be used selectively to create a more defined conversational area

8. Final Visualization

Exterior Sketch



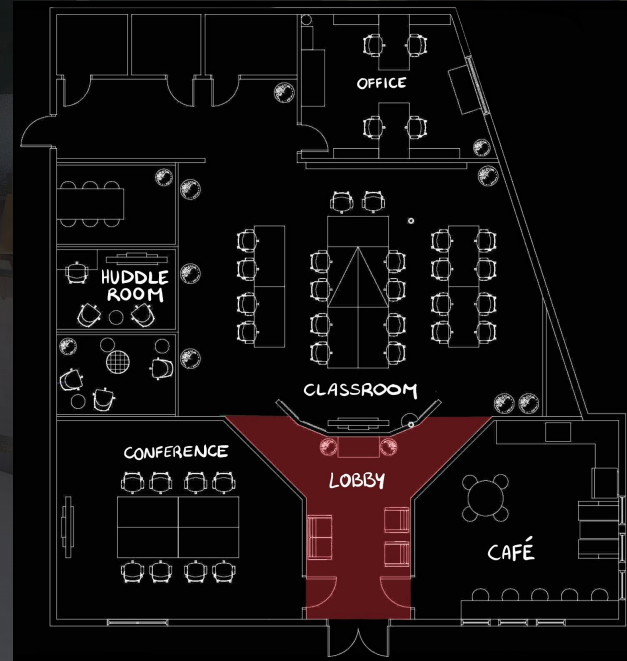
LOBBY





LOBBY

- Graphics
- Central Focus
- Visibility



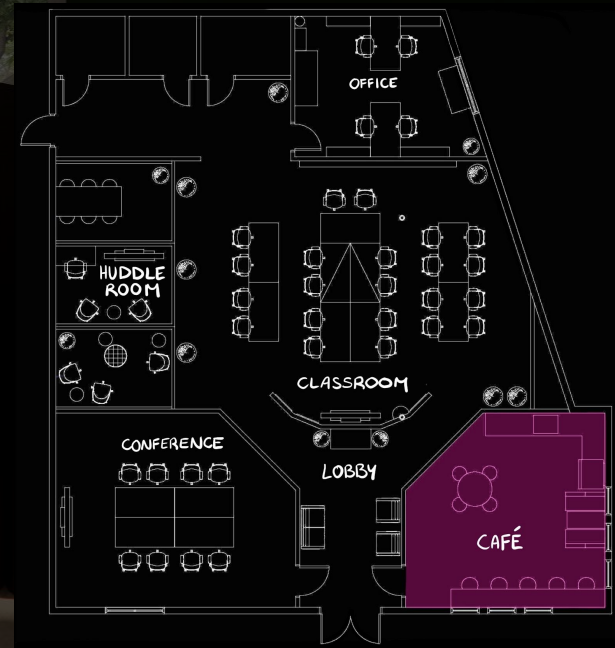
CAFE





CAFE

- Comfort
- Openness
- Natural Materials

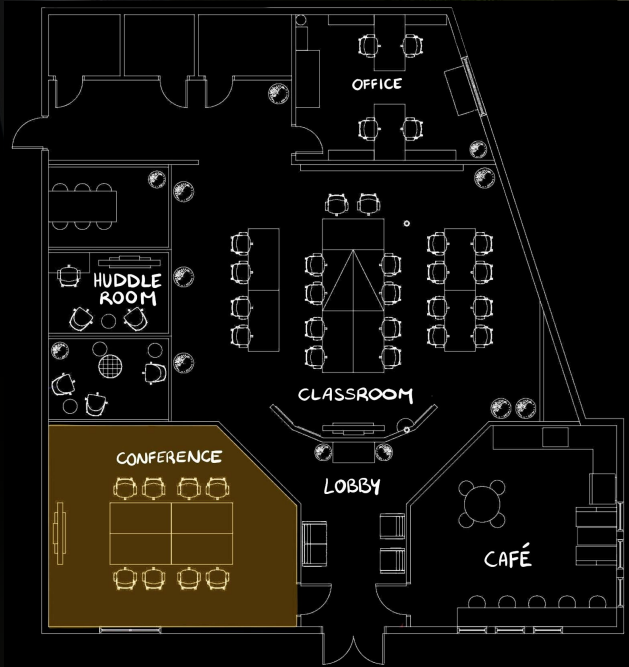


CONFERENCE ROOM



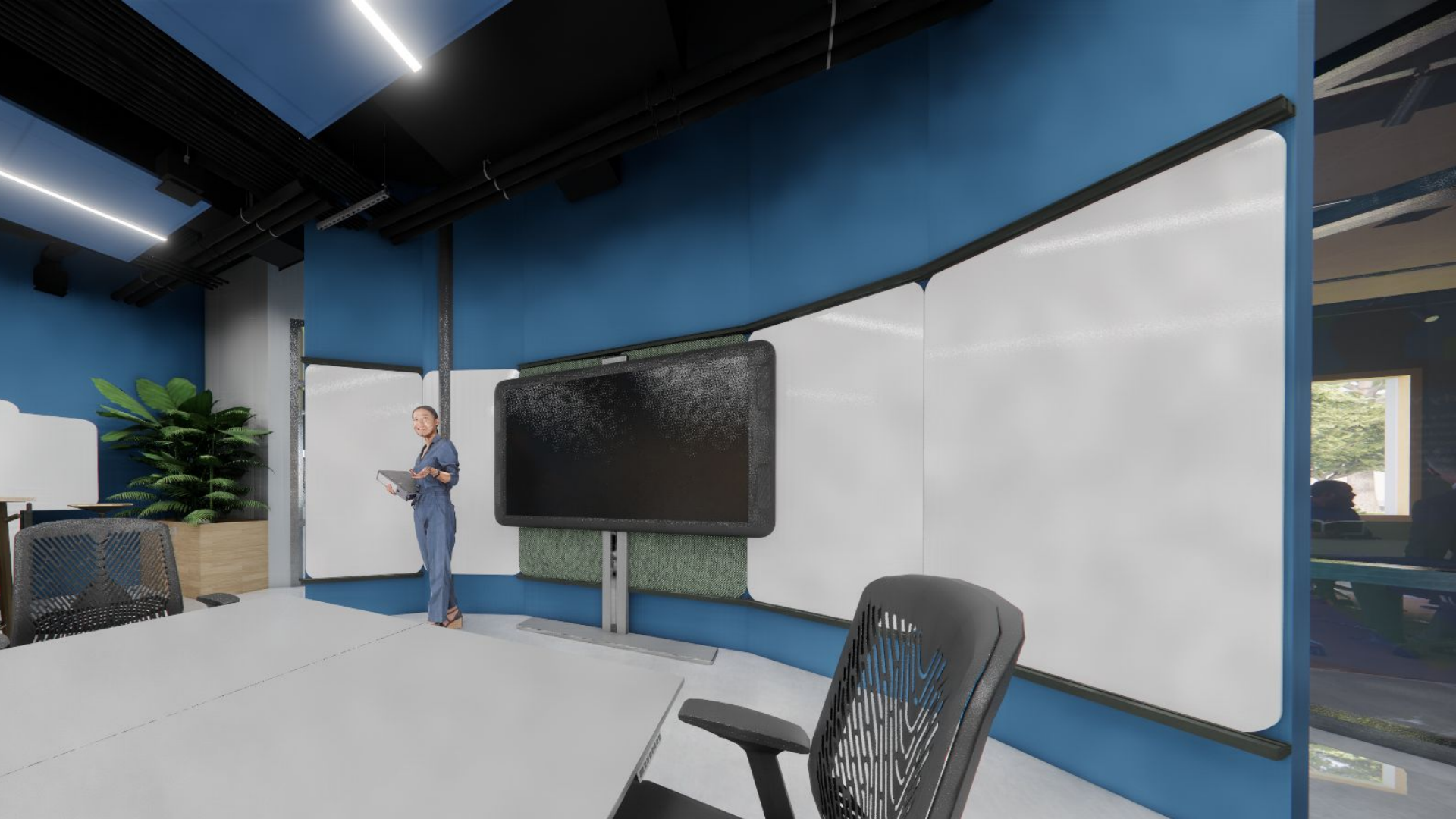
CONFERENCE ROOM

- Color
- Flexible Lighting



CLASSROOM

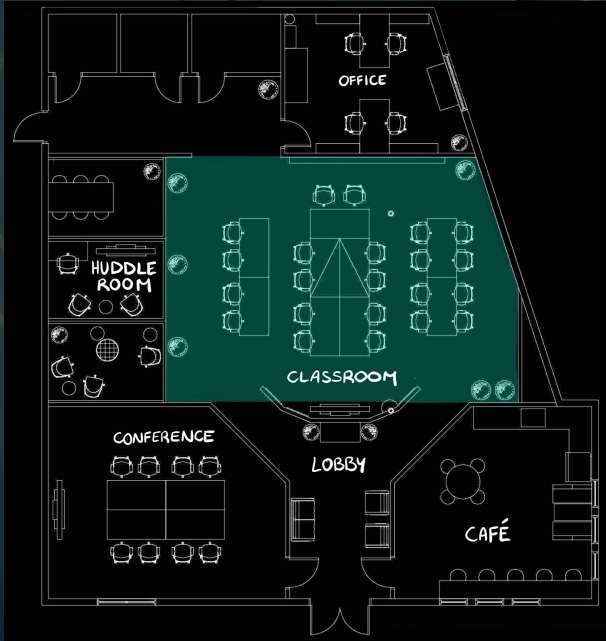






CLASSROOM

- Flexibility
- Acoustics
- Lighting



HUDDLE ROOMS



HUDDLE ROOM



HUDDLE ROOM

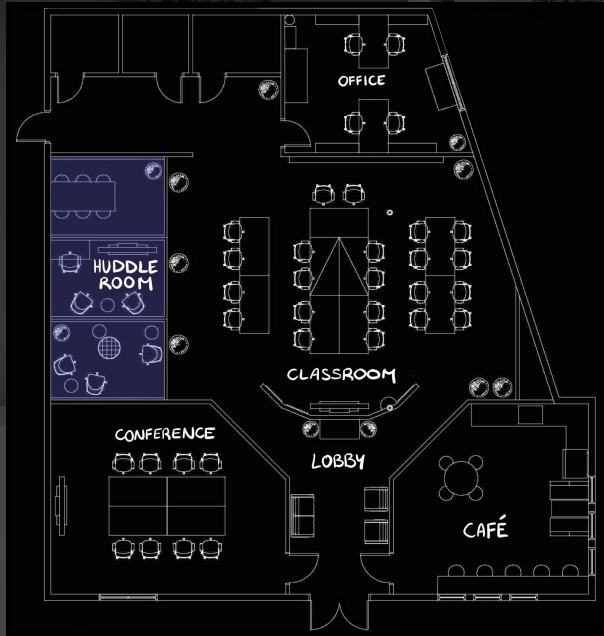


HUDDLE ROOM



HUDDLE ROOMS

- Color
- Tailored
- Comfortable

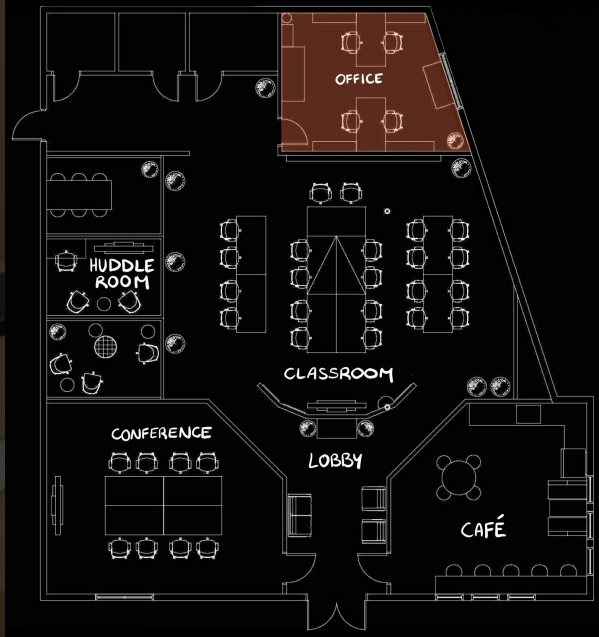


OFFICE



OFFICE

- Natural Materials
- Flexibility





...kassim

...many experiences are abundant
and available across campus through
experiential learning in the
classroom, Design Center, Studio
Labs, the Makerspace, volunteerism,
internships, and as client-sponsored
competitions, customized project
experiences, and elective courses.*

INDEX ↗